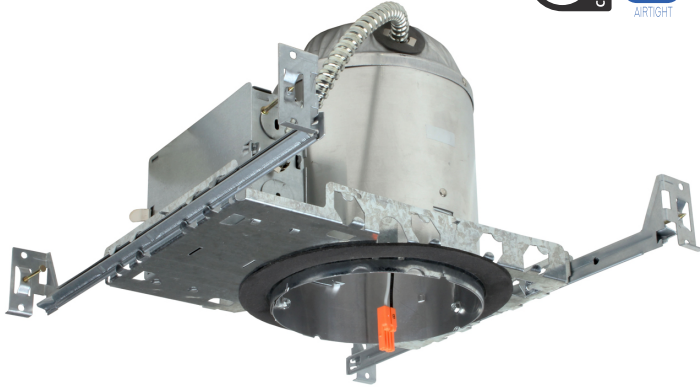
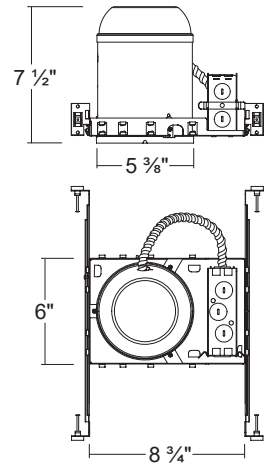


LED500ICA / LED500ICA-01V

5" IC Air-Tight LED Dedicated New construction Housing



Dimensions



SPECIFICATION

Plaster Frame

- Galvanized steel construction. The housing can be removed from plaster frame to provide access to the junction box

Junction Box

- Listed for through branch circuit wiring
- Contains seven 7/8" knockouts and four Romex pryouts with strain relief

Bar Hanger

- Pre-installed Real nail easily installs in regular lumber, engineered lumber
- Bar Hangers are adjustable from 13-5/8" to 25" and can be repositioned 90 degree on plaster frame

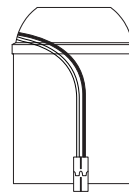
Listings

- cULus Listed for Damp Location
- cULus Listed for Feed Through
- Certified under ASTM-E283 for Air tight construction

CONNECTOR

LED500ICA

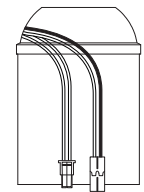
Triac Dimming Ver.



Ideal connector

LED500ICA-01V

0-10V Dimming Ver.



Molex connector Ideal connector

ORDERING INFORMATION

Model No.	Dimming	Description
LED500ICA	Triac Dimming	5" IC Air-Tight Dedicated New construction Housing
LED500ICA-01V	0-10V Dimming	5" IC Air-Tight Dedicated New construction Housing

COMPATIBLE TRIMS

LED500ICA

Model NO.

LRKT56X Series
LRKT54X Series
LRKT56X-3CCT Series
LRKT54X-3CCT Series
LRKT56X-5CCT Series
LRKT54X-5CCT Series

Description

5&6 inch LED All Retrofit kit Series
5 inch LED Square Retrofit kit Series
5&6 inch Selectable 3 CCT LED All Retrofit kit Series
5 inch Selectable 3 CCT LED Square Retrofit kit Series
5&6 inch Selectable 5 CCT LED All Retrofit kit Series
5 inch Selectable 5 CCT LED Square Retrofit kit Series

LED500ICA-01V

Model NO.

LRKT56X-5CCT-M Series
LRKT54X-5CCT-M Series

Description

5&6 inch Selectable 5 CCT LED All Retrofit kit Series
5 inch Selectable 5 CCT LED Square Retrofit kit Series